



# SNDT Women's University

APRIL  
2023



Department of  
Special Education

Juhu Road, Santacruz (W),  
Mumbai 400 049

[sndt.ac.in](http://sndt.ac.in)

Tel : +91-9820167470  
Email : [specialeducation@sndt.ac.in](mailto:specialeducation@sndt.ac.in)

# Our Mission



**‘Nurturing, Enabling and Empowering  
People with Disabilities’**

## About Department of Special Education

The Department of Special Education (DSE) was established in 1977. DSE offers special education training at degree level to women graduates to teach and rehabilitate children with various exceptionalities. Disability specific and cross-disability training programmes are offered at the Bachelors and Masters level. The teaching learning strategies followed at DSE strongly advocate the use of constructive pedagogy, experiential learning and technology integration. Several outreach programmes are conducted to sensitize, create awareness and train various stakeholders for inclusive education. The Department offers internships and many short term skill enhancement programmes for the students. Campus placement services are offered to the students which have a longstanding record of 100% placement. In addition to conducting various community outreach programmes, DSE also has several MOUs and collaborations with national bodies, universities, schools and NGOs for skill development, innovative practices and research. This booklet is a glimpse into the highlights of the department.

Contact Us



[specialeducation@sndt.ac.in/](mailto:specialeducation@sndt.ac.in)  
[spedsndt@gmail.com](mailto:spedsndt@gmail.com)



[www.dsesndtwu.in](http://www.dsesndtwu.in)



[@dsesndtwu](https://www.instagram.com/dsesndtwu)



[www.facebook.co./spedsndt](https://www.facebook.co./spedsndt)

Visit Us At :

# Teaching Staff



**Dr Sujata Bhan**  
Professor & Head



**Dr Apoorva Panshikar**  
Assistant Professor



**Ms Betty Abraham**  
Assistant Professor



**Ms Yukti Gupta**  
Assistant Professor



**Ms Hemali Gada**  
Assistant Professor



**Ms Ishita Sakpal**  
Assistant Professor



**Ms Hetal Waghela**  
Assistant Professor

# Non-Teaching Staff



**Mr Prabhakar Pilankar**  
Senior Clerk



**Mr Roshan Dhone**  
Junior Clerk

# Our Programmes at a Glance

## **B.Ed. (Special Education) (Specialisation - Learning Disability, Intellectual Disability and Visual Impairment) RCI recognition (2021-2026)**

- **Eligibility** : Graduation from any recognized university with minimum 50% or 55% marks as per MH-CET rules
- **Duration** : Two years (4 Semesters)
- **Medium of Instruction** : English
- **Medium of Examination** : English
- **Entrance Test** : MH-CET & ELCT

## **M.Ed. (Special Education) (Specialisation - Learning Disability, Intellectual Disability and Visual Impairment) RCI recognition (2021-2026)**

- **Eligibility** : B.Ed. Special Education in respective disability area with minimum 50% marks or B.A.-B.Ed./B.Sc. - B.Ed. (4 year Integrated course) in respective Disability area with minimum 50% marks
- **Duration** : Two years (4 Semesters)
- **Medium of Instruction** : English
- **Medium of Examination** : English
- **Entrance Test** : MH-CET

## **PG Diploma in Management of Learning Disability**

- **Eligibility**: Graduation from any recognized university with minimum 50% marks with one year training course at degree or diploma level in Education/ Special Education/ Early Childhood Education/ Guidance and Counselling
- **Duration**: One Year (2 Semesters), Part-time
- **Medium of Instructions** : English
- **Medium of Examination** : English
- **Entrance Test**: Written Test + Personal Interview

## **Ph.D. (Special Education)**

- **Eligibility**: Women having Master's degree in Special Education allied fields with minimum 55% marks
- **Duration**: Three years
- **Medium of Instruction**: English
- **Medium of Examination**: English
- **Entrance Test**: PET

## **Value Added Courses**

- Certificate course in Shadow Teaching
- Certificate course in Diversity and Inclusive Education under CHETNA

**8 Courses are offered  
under CBCS**

# Programme Outcomes

## B.Ed. (Special Education)

### Learning Disability / Intellectual Disability / Visual Impairment

The programme is designed to enable the student teachers to:

1. Acquire knowledge & skills about human development, contemporary Indian education, and pedagogy of various school subjects and assessment for learning
2. Acquire knowledge & skills about nature and educational needs of children with disabilities as well as of few select specific disabilities
3. Explain and respond to the educational, physical and vocational needs of persons with disabilities
4. Develop skills in systematic assessment
5. Develop curriculum for persons with Learning disabilities (LD) Intellectual Disability (ID), and Visual Impairment (VI)
6. Plan and implement educational programmes needed for the children with special needs (LD, ID, VI)
7. Familiarize themselves with the management of special education programmes for children with LD, ID, VI
8. Coordinate and collaborate with parents, family, doctors and the community to help children with disabilities become productive and useful members of the society
9. Develop abilities and skills to create awareness and sensitivity in the society towards persons with disabilities
10. Promote and facilitate inclusion of children with special education needs in the mainstream
11. Develop conceptual understanding of education provisions and skills for working with children with various disabilities in Special and inclusive settings
12. Enhance knowledge and skills for professional development

# Programme Outcomes

## M.Ed. (Special Education)

### Learning Disability / Intellectual Disability / Visual Impairment

The programme is designed to enable the student teachers to:

1. Discuss the concept of Special Education and its perspectives, exceptionalities and their inter-relatedness
2. Explain the various theories in human development and psychology and apply them on teaching – learning situations
3. Discuss the role of research in theory and practice of special education and design, execute, and write research report in special education
4. Explain the concept, principles theories and approaches of management with reference to special education
5. Explain the various approaches and role of educational technology in education and special education
6. Describe the concept, principles, approaches, trends and issues in curricular development in the field of special education
7. Describe various approaches and areas of assessments
8. Use techniques of assessment to Interpret the results and diagnose learning disability
9. Develop appropriate remedial programme for inclusion of persons with Learning Disability
10. Explain the concept, aetiology, characteristics of intellectual disability and use appropriate instruments for assessment of intellectual disability
11. Explain the principles and approaches to curriculum development and instructional programme and develop instructional programs effective for students with intellectual disability

# Programme Outcomes

## Post Graduate Diploma in Management of Learning Disability

The programme is designed to enable the students to:

1. Discuss the nature and types of exceptionalities and associated learning disorders
2. Explain the stages of child growth and development
3. Apprise the psychological processes involved in learning and their educational implications
4. Discuss the need, types and methods of assessment of learning disability
5. Develop appropriate tools for assessment of learning disability
6. Explain curriculum development and adaptation for students with learning disability
7. Implement various methods of intervention for students with learning disability
8. Discuss the philosophy and practices of inclusion education for students with learning disability



# Other Specialized Units

## Compensatory and Remedial Education (CARE)

CARE is a unit set up for children with learning disability who need individualized support in their learning and to cater to their varied educational and behavioural needs. It offers National Institute of Open Schooling (NIOS) and Pratham curriculum to its students.

## Assessment Unit

In the Assessment Unit of the Department, many children are referred for psychoeducational assessment. Guidance and counselling is offered as required.

## Arushi- The Learning Centre



Arushi is a self-supporting experimental unit of the DSE for children with special needs. Its primary goal is to help children with special needs those cannot be met by the competitive existing mainstream education system. A team of qualified, experienced teachers and a warm, non-threatening environment enables our learners to grow optimally in all areas of development.

Arushi caters to the needs of children with autism, cerebral palsy, intellectual disability, learning disability and visual impairment, slow learning capabilities, ADHD, behavioral problems and emotional disturbance. The levels of education include classes at early intervention, pre-primary, intermediate, preparatory and pre-vocational. Individualised Education Plan (IEP) is implemented at the centre. Arushi boasts of a well equipped resource room and a therapy centre. The therapies being offered are speech therapy, occupational therapy, physiotherapy, art based therapy, and dance & movement based therapy. Akhil Autism Sensory Garden is a unique garden to stimulate all senses and help in cognitive development of children at Arushi. Being a self supporting unit, Arushi is supported by various philanthropists and NGOs like Tata Trusts, Rotary Club, Lions Club, etc.

**Age Group :** 5 to 20 years

### Areas of Instruction :

**Curricular :** Language, Mathematics, Science, Social Science, English, Economics, Home-Science, Business Studies, Word processing, General Knowledge.

**Co-curricular :** Art and Craft, Sports, Computers, Cooking, Yoga, Music and Movement



# Research Projects

Sr. No.	Topic	Researchers	Year
1.	Accessibility to Plus Curriculum for Students with Visual Impairment in Inclusive Schools in India	Sujata Bhan & Yukti Gupta	2023
2.	A Study on Inclusive Education at Tripura : A CBM Project	Sujata Bhan & Apoorva Panshikar	2022
3.	Effect of Universal Design for Learning : Tata Institute of Social Sciences (TISS)	Sujata Bhan & Apoorva Panshikar	2022
4.	Development of Word -Level Reading and Spelling Tests in Marathi for Marathi Medium Students at Primary Level : SUUTI, SNDTWU	Apoorva Panshika	2017
5.	Transition from Primary to Junior High School for Students with Visual Impairment in Gulbarga, Karnataka : A Sightsavers Project	Sujata Bhan	2013
6.	Special Needs Education/Childcare Related International Comparison : A Survey Sagami Women 's University, Department of Education and Child studies, Japan	Preeti Verma & Sujata Bhan	2012
7.	Teacher Training in Total Communication Approach and its Effect on Development of Language Readiness in Pre -School Children with Communication Deficits in Maharashtra: A UGC Major Research Project	Rubina Lal & Apoorva Panshikar	2008
8.	A Study of Braille Writing Skills Acquisition in Early Learners with Visual Impairment using Brailier and Sate as Assistive Devices : A Project by Perkins School for the Blind, Massachusetts, USA	Sujata Bhan & Smriti Swarup	2008

And many more...



# Consultancy

## **1. National Council of Educational Research and Training (NCERT)**

- E-Content Guidelines for Children with Disabilities (Pan India)
- Barkha: A Reading Series for ALL
- Inclusion Index
- Inclusive Education Advocacy Guides under United Nations Educational, Scientific and Cultural Organization (UNESCO) Project
- Sensitisation Programme for Teachers of Kasturba Gandhi Balika Vidyalayas
- Home-Based Education Practices for Children in Sarva Siksha Abhiyan (SSA)
- Curriculum Adaptation at Primary and Secondary Level
- Learning Material based on Universal Design for Learning (UDL) using ICT

## **2. Rehabilitation Council of India (RCI)**

- Policy Making
- Curriculum Development for M.Ed., B.Ed. and D.Ed. Programmes in Special Education
- Curriculum Development for Community Based Inclusive Development (CBID) Programme
- 5 day and 15-day Training Module for Mainstream Teachers for Inclusive Education

## **3. Government of Maharashtra**

- Certification of Special Children
- United Nations Development Programme Project (UNDP)

## **4. Education, Training & Service Centre for PWDs (ETC)**

- Curriculum Planning
- Teacher Training

## **5. Laadli Media Advocacy Population**

- Disability Sensitisation for SONY Television

## **6. Trinayani**

- Disability Awareness on FM Channel

## **7. Consortium of Inclusive Education, Vadodara**

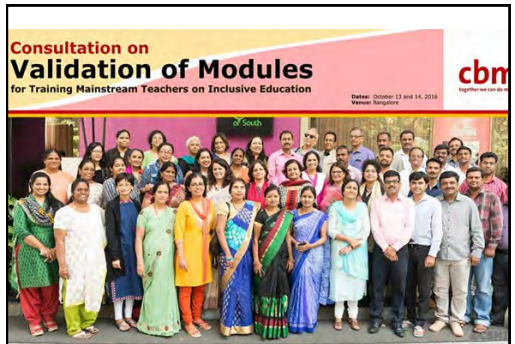
- Capacity Building of Teachers in Inclusive Pedagogy
- Development of Training Modules for Inclusive Education

## **8. Research Project of Bethany Society, Shillong under National Institute for Empowerment of Persons with Visual Disabilities**

# Consultancy



National Symposium,  
Rehabilitation Council of India



Consultant to CBM



Research Consultant to NIEPVD



Capacity Building at Panjab  
University, Chandigarh



Ministry of Social Justice  
and Empowerment

# Extension Work

1. E-learning Content for Children with Special Needs (CwSN) for Special Educators under Samagra Shiksha Project, Jammu & Kashmir
2. Inclusion of Children with Visual Impairment and other Disabilities, Department of Education of Groups with Special Needs (DEGSN) and International Relations Division (IRD), NCERT (Pan India)
3. Curriculum Planning and Development, NIEPVD, Dehradun
4. Skill Enhancement of Special Educators, Prayas Institute for Special Education & Research, Rajasthan
5. Special and Inclusive Pedagogies, Deepak Foundation, Gujarat and Army School Southern Command, Pune
6. Curriculum Adaptation, RAISE-Northeast Project under Bethany Society, Sikkim
7. Master Trainers of CBID Programme, RCI
8. MOUs signed with practising schools of DSE, Tata Institute of Social Sciences, and St. Xavier's Institute of Education



# Faculty Participation



ICEVI- WBU World Congress,  
USA



CIF Fellowship,  
Sweden



Faculty Exchange with University of  
Macerata, Italy



Conference of British Council,  
Dubai

# Faculty Participation



Art Based Therapy



Capacity Building of IE Teachers



Dance & Movement Therapy



Awareness on Inclusive Education

# Department Programmes

## International Conferences



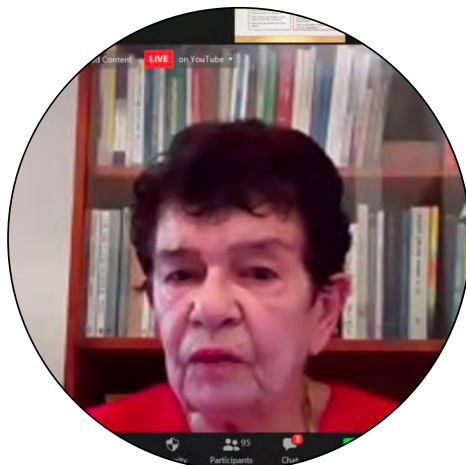
ICE 1: Be the Difference:  
Equality  
and Equity in Education



Holding Spaces Across  
Communities using Dance & Other  
Arts Therapies



ICE 2: Global Challenges in  
Educations:  
Resilience and Reinvention



Professional  
Development Buffet for  
Professionals



# Department Programmes

## National Conferences



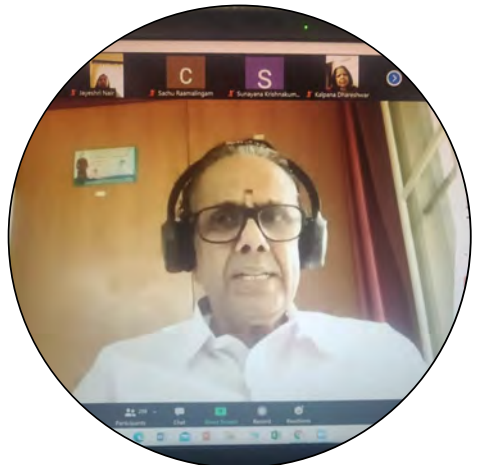
Rights of Differently  
Abled Women



Conversations on NEP 2020:  
The Road Map



Addressing Environmental  
Barriers and Universal Design



Empowering and Enabling the  
School Stakeholders

# Department Programmes



Addressing Barriers and  
Universal Design



Gender and Disability



National Curriculum Framework:  
Foundational Stage 2022:  
Implications for Early Childhood  
Educators



RUSA Sponsored Short Term  
Course in collaboration with  
UGC-HRDC, University of  
Mumbai

# Star Alumnae



**Alisha Lalljee**

Psychologist,  
Psychotherapist,  
Special Educator



**Heeral Mehta Ph. D.**

Faculty, City College of  
New York, NY



**Manjushree Patil**

Founder, Director,  
Aatman Academy



**Namita Jacob Ph.D.**

Educational Consultant,  
Perkins International



**Radhika Misquitta Ph.D.**

Co-Principal, The Gateway  
School of Mumbai



**Rubina Lal, Ph.D.**

Founder, Trustee, SOPAN



**Stuti Gaur**

Special Educator,  
Directorate of Education



**Suzanne Rodricks**

Principal, Dubai Scholars Al  
Warqaa

And the list is extensive...

# Alumnae Allegro



Raising Achievements  
through Creative  
Thinking by  
Suzanne Rodricks



Apps, Robotics,  
Teaching Learning  
Material used in Special  
Education by  
Alisha Lalljee



Language Development  
and Doodling by  
Geeta Dalal



Project and Inquiry  
Based Learning by  
Manjushree Patil



Art of Teaching by  
Rakhee Chhabria

# Distinguished Visitors



Ms Phoebe Long, Director  
Breakthru Academy, Malaysia



Prof. Piero Crispiani & Dr Eleonora Palmieri,  
University of Macerata, Italy



Shri V. C. Rastogi (IAS) Principal Secretary of Higher and Technical Education



Prof. Richard Rose,  
University of Northampton, UK



Ms Fatane Amiri, Founder Director  
International Parvaz Film Festival, Iran

# Campus Placement



# Community Awareness



Poster Competition by College Students



Workshop on Menstrual Hygiene

Seva Mandal Education Society's  
**SMT. MANIBEN M.P. SHAH WOMEN'S COLLEGE OF  
ARTS AND COMMERCE (AUTONOMOUS)**  
NAAC Re-Accredited B++ (CGPA 2.88/4, Cycle: III)  
Recipient of UGC - CPJ Grant (2018-2021)  
Adjudged 'Best College (2017-2018), S.N.D.U. Women's University

Department of Sociology Organises a Guest Lecture on  
**"Career in Special Education"**



Resource Person - **Dr. Apoorva Panshikar**  
Assistant Professor, Dept. of Special Education,  
SNMT Women's University, Juhu

Date - 10<sup>th</sup> January 2023      Time - 10.30 am to 11.30

Venue - Room No 204, New Building



**Ms. Archana Patil**  
In-Charge Principal



**Dr. Bhavana Prem Chand**  
Head, Department of Sociology

Smt. Parmeshwar Devi Gorhandas Garodia Educational Complex, 128, S.A. Kikadi Road, Matunga, Mumbai - 40



Street Play

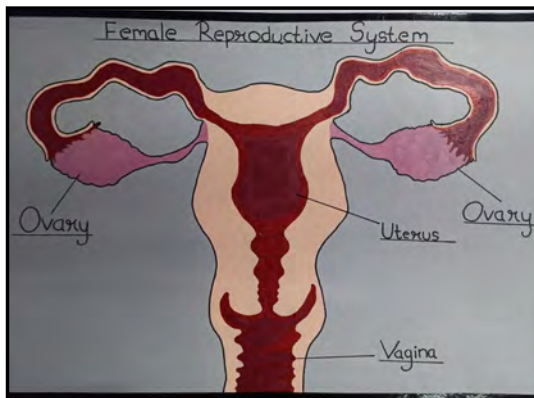
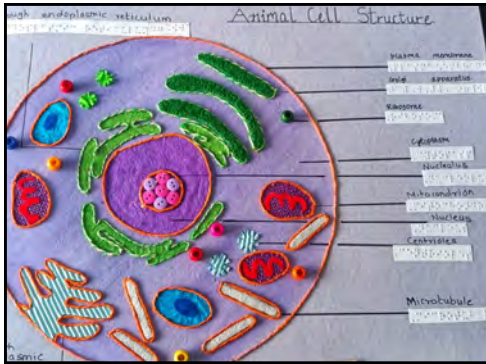


Special Screening in a Mall





# Teaching Learning Aids



# Student Internship



Mural Making



Workshop with Teachers



Assessment of Children with Learning Difficulties



Workshop with Students

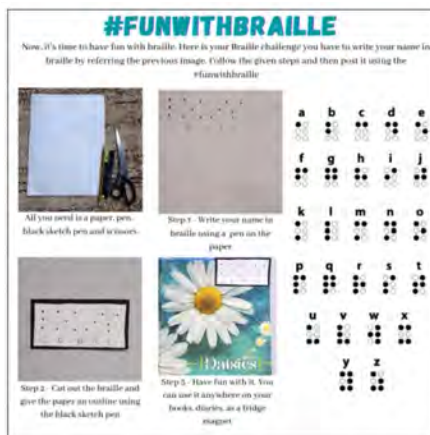
# Celebration of Important Days



International Day of Persons with Disabilities



Dyslexia Awareness Day



World Braille day



World Down Syndrome day



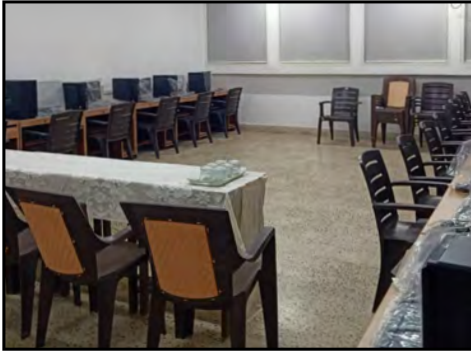
Independence Day

# Student Talent



# Arushi - The Learning Centre

## Facilities



Computer Room



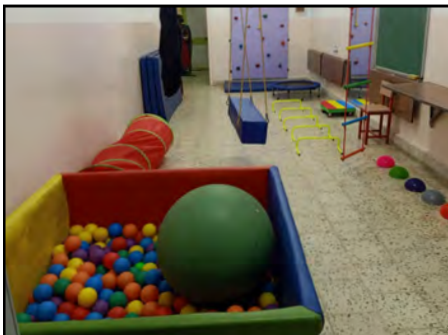
Resource Room



Sensory Garden



Accessible Washroom



Occupational Therapy Room



Pre - Vocational Room

# Arushi - The Learning Centre

## Services



Speech Therapy



Counselling



Occupational Therapy



Dance and Movement Therapy



Art Based Therapy

# Arushi - The Learning Centre

## Activites



# Arushi - The Learning Centre

## Pre - Vocational Activities





# Arushi - The Learning Centre

## Festival Celebrations



# Arushi - The Learning Centre

## Inclusive Celebrations



# Arushi - The Learning Centre

## Visits





## एस. एन्. डी. टी. महिला विद्यापीठ

### \* कुलगीत \*

“संस्कृता स्त्री पराशक्ति” स्वर हमारा है  
विश्व है परिवार, भारत घर हमारा है।  
हम नहीं हैं दीन, कहता कौन हम अबला  
है सबल संस्कृति हमारी, हम सभी सबला  
ज्योती से जगमग हुआ, अंतर हमारा है॥  
स्वप्न ठाकरसी हुआ साकार है इसमें  
महर्षि कर्वे तपस्या - सार है इसमें  
हम दिशाएँ और यह दिनकर हमारा है॥  
“संस्कृता स्त्री पराशक्ति” स्वर हमारा है  
विश्व है परिवार, भारत घर हमारा है।



### Booklet Committee

- Prof. Medha Tapiawala, Dean, Faculty of Humanities
- Mr. Mehul Khale, PRO
- Mr. Shrikant Salekar, Jr. Stenographer

Published by  
Shreemati Nathibai Damodar Thackersey **Women's**  
University, Mumbai